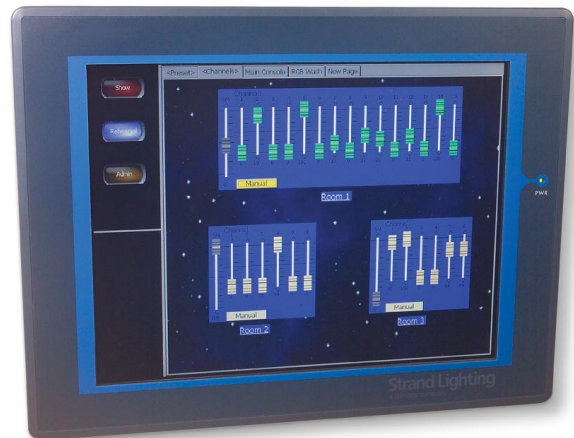


**Strand Architectural Controls**

# Vision.net

Vision.net touchscreen technology is designed to bring exceptional control and flexibility to your project. Whether you are designing a board room or a large hotel and convention center complex, Vision.net provides a wide range of fully scalable solutions. Easy to set up and program, Vision.net touchscreens can be combined with our Outlook VN control stations, offering a wide range of push-button and slider stations to meet the needs of any system. Any system command may be programmed to any push button in your system for exceptional flexibility. Vision.net opens a connection to our powerful range of entertainment lighting control systems, providing large scale control for any interactive display or presentation in today's modern themed environments.



15-inch color touchscreen

## Features

- Next Generation Architectural control
- Touchscreen systems provide connectivity to Vision.net and direct to Palette consoles and dimmer racks for system access and monitoring
- Station-based technology; no central processor required
- Available with push-button, slider and touchscreen panels
- Simple computer-based set up and configuration with Vision.net designer software
- Fully scalable to hundreds of stations
- Occupancy sensors and Photocells available
- Designers can easily create rooms, room combinations and easily define stations and buttons
- The system can easily upload existing configurations for editing

- Systems are simple to support and change
- Low-cost Cat 5E wiring

## System Capacity and Connectivity

- Scales from a single space up to 255 rooms in a single system
- 125 channels per room
- Unlimited dimmers per room with patching and DMX512 capture support
- 255 stations per system
- Calendar-based events
- Astronomical Time-clock events
- Connects to C21, A21 and R21 Dimmer Systems
- Vision.net to DMX module available for interface to a wide range of DMX-controlled devices

## SPECIFICATION SUBMITTAL

CONSULTANT <input type="text"/>	PROJECT NAME: <input type="text"/>	MODEL NUMBER   QUANTITY: <input type="text"/> <input type="text"/> <input type="text"/> <input type="text"/> <input type="text"/> <input type="text"/> <input type="text"/> <input type="text"/>
DATE: <input type="text"/>	PROJECT NUMBER: <input type="text"/>	APPROVED BY: <input type="text"/>

## Strand Architectural Controls

### Vision.net Touch Screen Features

- Full color touchscreens available in 7-inch and 15-inch screen sizes
- Screens may be easily configured and set up with Vision.net Designer software with USB, serial data, and Ethernet interfaces
- Using our optional ShowNet Ethernet connectivity touchscreens can provide remote access to Strand Lighting Rack Palette, Palette and Light Palette Control Consoles, C21, A21 and R21 dimming systems
- Touchscreens provide system astronomical time-clock and calendar functions
- Wireless Touchscreen available
- Fully graphical Room Combine supported
- Bit-mapped backgrounds provide custom appearance
- Wide range of on-screen button and fader options
- Web browser available for all network-based stations



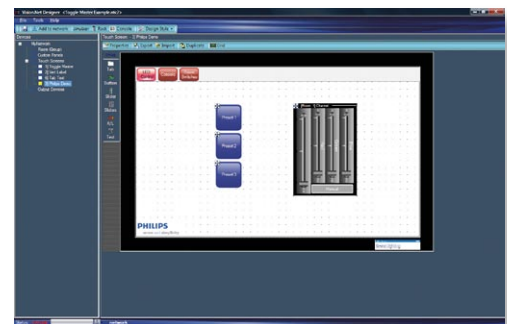
*Touchscreens support custom button styles and fader labelling as well as a wide range of features and functions*



*Wireless touchscreen*

### Vision.net Station Features

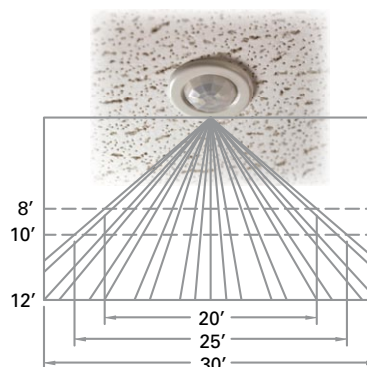
- All stations' buttons and faders are fully programmable
- All stations include integrated processors and may operate as stand-alone systems
- Station set up and configuration is simple
- Wall stations all have unique addresses
- Configuration software can upload and download station set-up data
- Commands include:
  - Raise Lower
  - Preset
  - Toggle on/off
  - Smart commands allow multiple system commands to be executed from a single button press
  - Commands to Palette and Light Palette Consoles



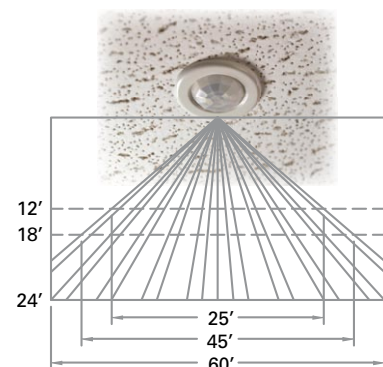
*Touchscreen set-up slider/button view*

### Vision.net Occupancy Sensors

Vision.net Occupancy Sensors and Photocells provide dynamic lighting control for your facility. Choose from wall-mount and two ceiling-mount occupancy sensors to meet the specific needs of your system. Photocell stations provide a choice of lumen maintenance and daylight harvesting.

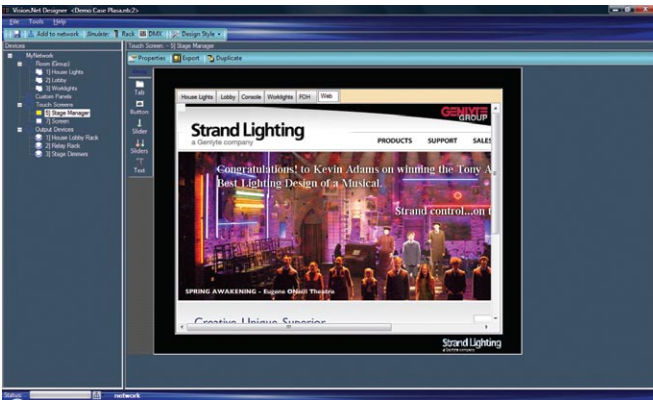


*Field of View:  
Occupancy Sensor (63059CM)*



*Field of View:  
Occupancy Sensor (63059HB)*

Strand Architectural Controls



Web browser available for all network-based stations



Optional remote access to Strand Control Consoles via ethernet

Vision.net Designer

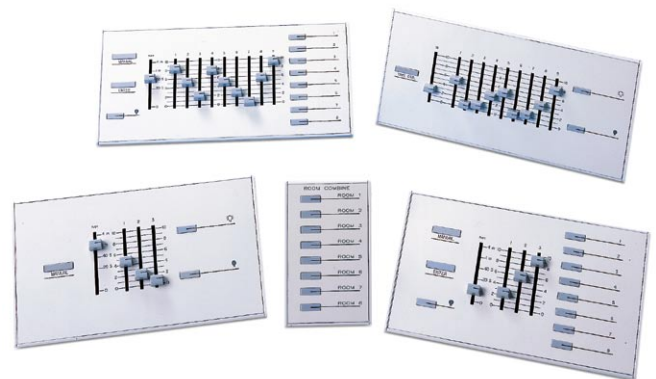
- Windows-based configuration software
- Simple point and click operation
- Easy download and upload of station configuration data to an entire system from a single access point
- Built in design tools and system simulators allow users to fully test and simulate their systems
- Drag and drop touchscreen setup



Vision.net Designer set-up screen



System outputs may be simulated so that you can easily test your design and configuration.



Outlook VN stations provide a wide range of button and fader stations. Any button can be programmed with a wide range of functions.

## Strand Architectural Controls

## Ordering Information

Cat No Description

## Vision.net Control Stations

## Touchscreen Stations

95242A	Vision.net 7-inch Color VGA Touchscreen Station, Light Almond*
95242B	Vision.net 7-inch Color VGA Touchscreen Station, Black*
95242P-A	Vision.net 7-inch Color VGA Touchscreen Station, Portable, Light Almond
95242P-B	Vision.net 7-inch Color VGA Touchscreen Station, Portable, Black
95242SE	Vision.net 7-inch Color VGA Touchscreen Station, Flush, Locking Enclosure, Black
95242RM	Vision.net 7-inch Color VGA Touchscreen Station, Rack Mount, Black
95240RM	Vision.net 15-inch Color VGA Touchscreen Station, Rack Mount
95241	Vision.net 10-inch wireless Color Touchscreen

\* Note these items require one of the back boxes below:

95243	Vision.net 7-inch Flush Mount Back Box Kit For 95242A Or 95242B
95244	Vision.net 7-inch Surface Mount Back Box Kit for 95242B
95244A	Vision.net 7-inch Surface mount Back Box Kit for 95242A, almond finish

## Outlook VN Master Slider Preset Stations

63003VN	Master Station – 3 channel 8 preset, 4 gang
---------	---

63006VN	Master Station – 6 channel 8 preset, 4 gang
63009VN	Master Station – 9 channel 8 preset, 5 gang
63012VN	Master Station – 12 channel 8 preset, 6 gang
63015VN	Master Station – 15 channel 8 preset, 7 gang

To order tabletop versions, add "P" to the end of the catalog number.

## Outlook VN Fader Slider Stations

63103VN	Fader Slider Station – 3 Channel, 4 gang
63106VN	Fader Slider Station – 6 Channel, 4 gang

## Outlook VN Programmable Push-button Stations

63021VN	Remote Station – 1 button, 1 gang
63022VN	Remote Station – 2 button, 1 gang
63024VN	Remote Station – 4 button, 1 gang
63028VN	Remote Station – 8 button, 1 gang

To order tabletop versions, add "P" to the end of the catalog number.

Standard faceplate finish all Outlook VN Stations: Soft White

## Occupancy Sensors and Photocells

63059CM	Ceiling-mount Occupancy Sensor
63059WM	Wall-mount Occupancy Sensor
63059HB	High Bay-mount Occupancy Sensor
63060CM	Ceiling-mount Photocell
63062	Remote programmer for Occupancy Sensors and Photocells

## Accessories

<b>Cables</b>	All tabletop stations include one 25 ft. cable
66099/10	Tabletop Station Ext. Cable (A6M-A6F) - 9 ft (3m)
66099	Tabletop Station Ext. Cable (A6M-A6F) - 25 ft (8m)
66099/50	Tabletop Station Ext. Cable (A6M-A6F) - 50 ft (16m)

## Receptacle Stations

stainless steel faceplate w/insert

63041VN	Outlook Receptacle Station (D6F) - 1 gang
63035	Vision.net RS232 Programming Station

## Vision.net – ShowNet Ethernet Nodes

65131SE	N21 Vision Net ShowNet Network Node, wall mount
65131RM	N21 Vision Net ShowNet Network Node, rack mount

## Vision.net DMX Interface

63054	Vision.net to DMX Interface (for use with Standard DMX512 Dimmers)
-------	--

## Vision.net Data Cable Splitter

63055RM	Vision.net 4 Way Data Cable Splitter 2U rack-mounting enclosure
63055SE	Vision.net 4 Way Data Cable Splitter with enclosure

## Vision.net Configuration Software

67518	Windows configuration software on CD-ROM
-------	--

<b>Strand Lighting, Inc.</b>	<b>Strand Lighting Europe Limited</b>	<b>Strand Lighting Asia Limited</b>	<b>www.strandlighting.com</b>
6603 Darin Way Cypress, CA 90630 Tel: (714) 230-8200 Fax: (714) 899-0042	Unit 2 Royce Road, Fleming Way Crawley, West Sussex RH10 9JY Tel: + 44 (0) 1293 554010 Fax: + 44 (0) 1293 554019	20/F Delta House, 3 On Yiu Street Shatin, N.T. Hong Kong Tel: +852 2757 3033 Fax: +852 2757 1767	

© Philips Group 2008  
All rights reserved.  
The Company reserves the right to make any variation in design or construction to the equipment described. E&OE