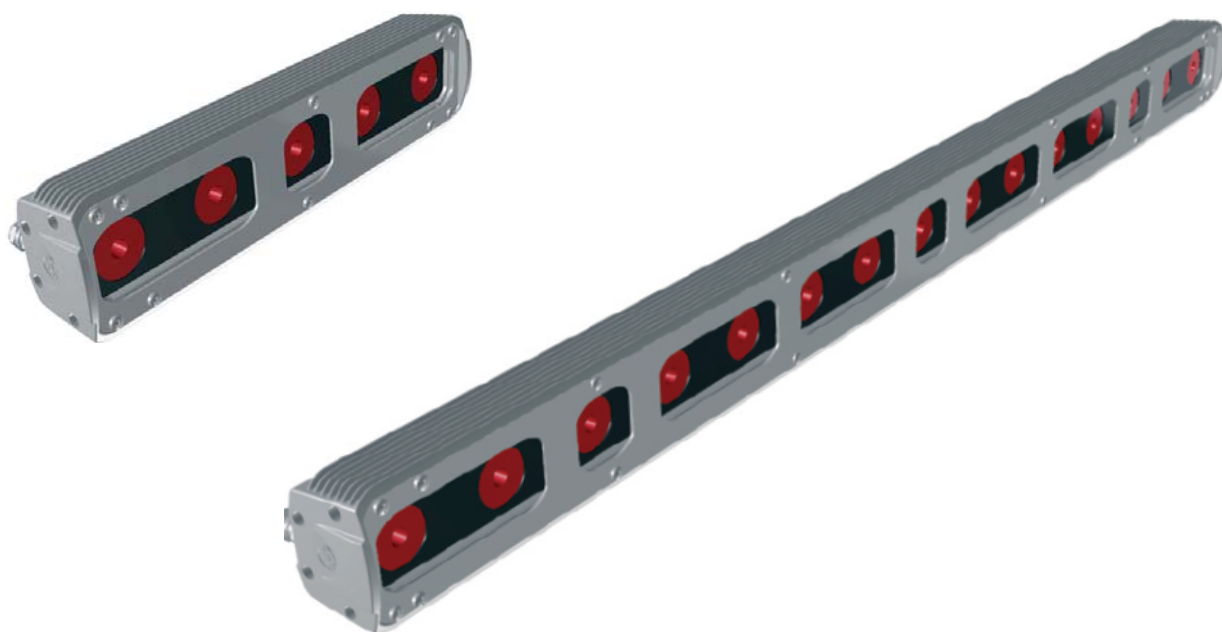


FOS

LED BARS



FOS is a new range of compact self-contained LED bars designed for colouring large surfaces with a uniform projection, either indoor and outdoor.

FOS LED bars can be used for many applications, such as:

- professional, for an ample range of special events;
- theatre and television, for uniform background colours and cycloramas;
- architectural, for lighting building facades, public and commercial spaces, monuments, etc.

All models are made on aluminium and steel offering high resistance to mechanical stress, with an IP65 protection rating.

FOS models come in two lengths: 33 cm and 100 cm, and are provided with 1,5 m cable.

Various FOS units can be easily connected together: the LEDs distribution pattern guarantees no black spaces between the LEDs of in-line bars, and an even coverage of lighted surfaces.

Four dedicated lenses sets (Spot, Medium flood, Wide flood, Asymmetrical) are available for each model, offering different light beam projection angles.

FOS can be controlled via any DMX lighting console.

FOS range comprises various models, which employ different sets of LEDs tailored for distinct applications:

FOS FULL COLOUR (Full colour LEDs);

FOS RGBA (Red + Green + Blue + Amber LEDs);

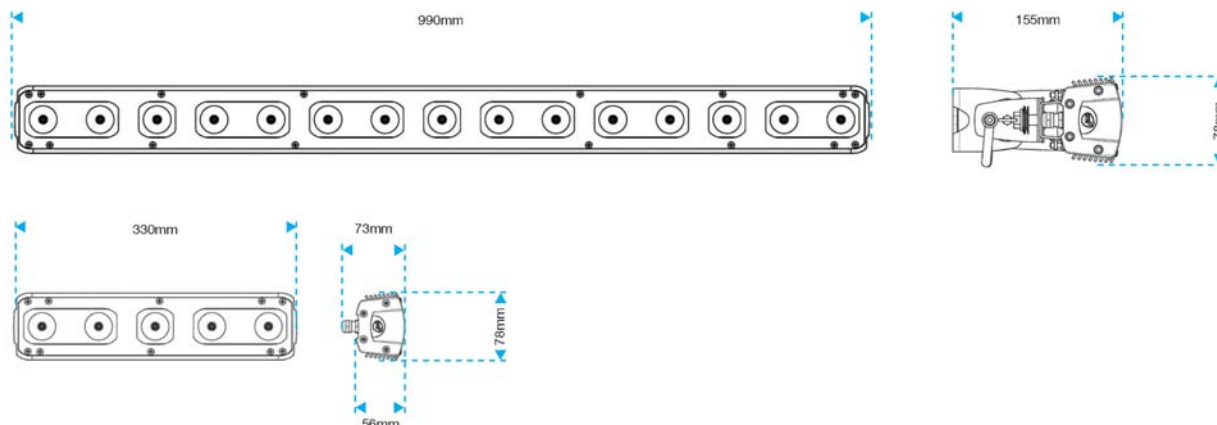
FOS WHITE (White + Amber LEDs).



The Lighting Company



● FOS LED BARS



Technical Specifications

LED technology

FOS 33 FULL COLOUR: 5 x 3W Full colour LEDs

FOS 100 FULL COLOUR: 15 x 3W Full colour LEDs

16 million colours; linear colour temperature 3200°K ÷ 5500°K; 16 selectable types of White.

FOS 33 RGBA: 16 x 1W Luxeon LEDs (4 x Red, 4 x Green, 4 x Blue, 4 x Amber)

FOS 100 RGBA: 48 x 1W Luxeon LEDs (12 x Red, 12 x Green, 12 x Blue, 12 x Amber)

16 million colours; linear colour temperature 3200°K ÷ 5500°K; 16 selectable types of White.

FOS 33 WHITE: 16 x 1W Luxeon LEDs (12 x White, 4 x Amber)

FOS 100 WHITE: 48 x 1W Luxeon LEDs (36 x White, 12 x Amber)

Linear colour temperature 3200°K ÷ 5500°K; 16 selectable types of White.

No infrared emission; no ultraviolet emission; LEDs average lifespan: 100.000 hours

Optical units

4 lenses sets available (Spot, Medium flood, Wide flood, Asymmetrical)

Control

Via any DMX lighting console

Protection

IP65 protection level against the penetration of solids and liquids

Construction

FOS is made on aluminium and steel

Power supply

Internal power supply; external dedicated Z1 and Z4 power supply / LED controllers

Connection

RJ12 connection system

Accessories

- Lenses set Spot
- Lenses set Medium flood
- Lenses set Wide flood
- Lenses set Asymmetrical
- Z1 power supply / LED controller
- Z4 rack power supply / LED controller
- Z1 OUTDOOR power supply / LED controller
- IR receiver for Z1/Z4
- RJ12 6-pole male connector
- 10XAWG26 multipolar black outdoor cable
- 6-pole flat cable for RJ connectors
- Crimping tool for RJ connectors



The Lighting Company