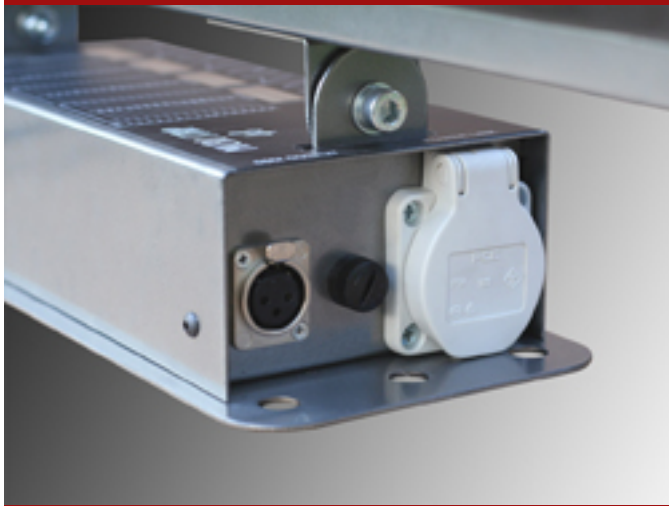


Fixture's description:

- Structure:** The flexibility of the unit is given by that it's divided to four individual sub-units internally. Each of these sub-units can be addressed to the same address to behave as single unit or to different DMX address to be used as four separate units. (Other setups are also possible like two halves, etc.) Each sub-units driving 4x3 (RGB) LEDs.
- Light source:** 48x1W Luxeon LEDs in three colors (red green and royal blue). Outgoing light is cold, no safety distance required because of the light source. Life expectancy: 100 000 hours, that is more than 30 years of life with 8 hours per day use.
- Optics:** 10 degrees collimators.
- Colors:** Red, green and royal blue. Each controlled on DMX data line via 8 bits. This gives 16.7 million possible color combination. All colors have 16 LEDs each.
- Tilting head:** The line-head of the fixture can be tilted for easy light positioning. The light direction can be adjusted by ± 75 degrees.
- Channels:** 4x6 channels with variable start addresses.
- Inputs:** DMX 512 using 3 pole XLR connectors.
- Power supply:** 230V / 50 Hz, max. 80W power consumption. Power outlet socket for linking and easy installing.
- Cooling:** Convection cooling. Max. ambient temperature: 40°C
- Housing:** Al-Mg alloy ultra light chassis with silver-grey color epoxy powder painting. Holes on the base plate for installing. All materials are easy recyclable.



Safety devices: LED power shuts off gradually in the case of using the fixture out of it's specified temperature range.

Cleaning: The collimators needs dust removal on outside from time to time.

Operational positioning: To be used in any position.

Weight: 3 kg without packaging.

Dimensions: 1000x135x145 mm

Installation: Six mounting holes on the base plate for easy rigging.

