

N21 ShowNet™ Nodes

Compact and flexible, the N21 ShowNet DMX nodes provide cost-effective network connectivity for facilities of all sizes. Each node features two or four DMX connectors that may be dynamically configured for input or output operation.

Based on a 32-bit ARM processor, all N21 nodes utilize the Linux operating systems for stable 10/100BT operation.

Nodes may be configured with Strand’s popular ShowNet software or with any web browser. Node status, Node ID, and DMX port identification are available on the integral LCD display. The display features adjustable back lighting.

All Strand ShowNet nodes feature advanced DMX patching, permitting any range of 512 numbers to be selected for each DMX port. Priority patching with up to three levels of priority assignments is available.



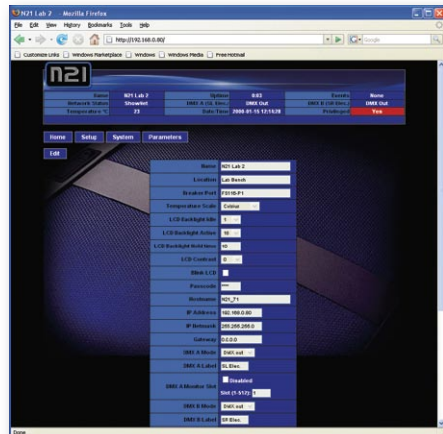
Features

- Compact and cost-effective ShowNet DMX nodes
- Fast 40 Hz DMX update rate
- DMX ports may be custom configured with any 512 DMX addresses for complete system flexibility
- One port may be configured to support Vision.net control input to ShowNet networking
- 10/100BT Ethernet operation
- Integral LCD display provides node and port labeling
- Fits standard two gang back boxes
- Local screen selector provides node status and configuration information
- 1U rack mount nodes available with 4 DMX ports
- Surface mount and pipe mount versions available
- Adjustable backlight levels for dark applications
- Fully compliant with IEEE802.3af power over Ethernet
- Dimmer status reporting link available on any port for legacy dimming systems
- Nodes may be configured with a standard Web browser
- Each node may be configured using any Pocket Palette wireless remote
- ShowNet nodes are available in portable, wall mount and 1U rack mount variants
- 32-bit processor standard with Linux O/S
- Compatible with all ShowNet nodes and control systems

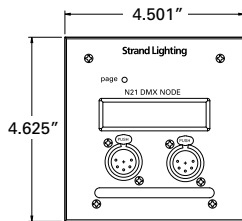
SPECIFICATION SUBMITTAL

CONSULTANT <input type="text"/>	PROJECT NAME: <input type="text"/>	MODEL NUMBER QUANTITY: <input type="text"/> <input type="text"/> <input type="text"/> <input type="text"/> <input type="text"/> <input type="text"/> <input type="text"/> <input type="text"/>
DATE: <input type="text"/>	PROJECT NUMBER: <input type="text"/>	APPROVED BY: <input type="text"/>

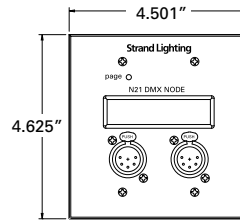
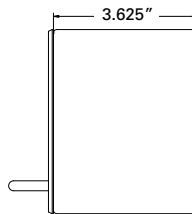
Strand Control Systems



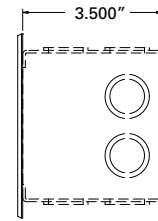
This graphic illustrates how easy it is to route DMX using a simple point-and-click web browser interface, the most powerful part of a ShowNet network. Over 32,000 DMX addresses are supported on all Strand Networks.



65152
N21 2-Port Node, POE, surface mount on SN-110 back box (not supplied)



65151
N21 2-Port Node, POE, flush mount on 2-gang back box (not supplied)



65154
N21 4-Port Node, rack mount

Ordering Information

Cat No Description

Cat No	Description
65151	N21 2-Port Node, POE, 2-gang
65152	N21 2-Port Node, POE, SN110 retrofit
65153	N21 2-Port Node, POE, with surface mount back box
65153-P	N21 2-Port Node, POE, with portable mount back box, C-clamp/U-bolt hardware
65154	N21 4-Port Node, 1U rack mount enclosure, universal AC adapter

Connections

Dimmers:

DMX 512 (512 Dimmers) 5-pin female XLR (2)

Ethernet: RJ45

Mechanical Data

Wall Mount Construction:

Steel faceplate designed to fit a standard deep masonry box.

Rack Mount Construction: Steel enclosure

Wall Mount Weight: .86 kg – 1.9 lbs

Rack Mount Weight: 2.2kg – 4.9 lbs

Surface Mount Dimensions (HXWXD): 114mm x 114mm x 101mm
4.5in. x 4.5in. x 4in.

Rack Mount Dimensions: 1U x 485mm x 255mm, 1U x 19 in x 6.5 in

Environmental Data

Operating Temperature: 0° to 40°C

Storage Temperature: -40° to 70°

Humidity: 5% - 95% non-condensing

Technical Specifications

Input Power: IEEE 802.3AF Power over Ethernet on all 2-port models.

Rack mount nodes include universal voltage external power supply

Standards Compliance

EMC emissions to EN50081-1, EN55014

EMC immunity to EN50082-1, IEC1000-2-2

Safety: EN60950

Design & build: CE

Ethernet IEEE

Strand Lighting, Inc.

6603 Darin Way
Cypress, CA 90630
Tel: (714) 230-8200
Fax: (714) 899-0042

Strand Lighting Europe Limited

Unit 2 Royce Road, Fleming Way
Crawley, West Sussex RH10 9JY
Tel: + 44 (0) 1293 554010
Fax: + 44 (0) 1293 554019

Strand Lighting Asia Limited

20/F Delta House,
3 On Yiu Street
Shatin, N.T. Hong Kong
Tel: +852 2757 3033
Fax: +852 2757 1767

www.strandlighting.com

© Philips Group 2008
All rights reserved.

The Company reserves the right to make any variation in design or construction to the equipment described. E&OE